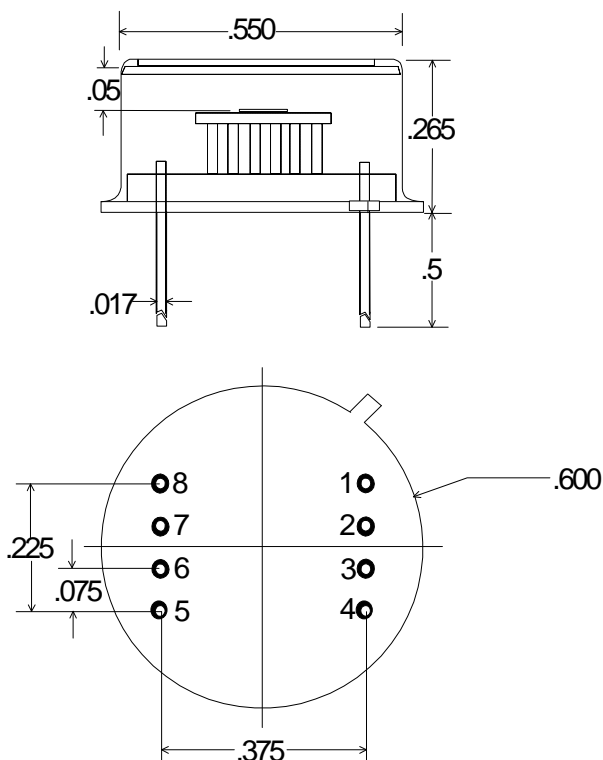


## TO - STYLE PHOTODIODE / AMPLIFIER


**Part no:**
**S - 058 - E8**
**PIN OUT**

- 1 = Offset Adj
- 2 = Inv In/Photodiode Cathode
- 3 = N-Inv In/Photodiode Anode/Case
- 4 = -V
- 5 = Gain Select
- 6 = Output
- 7 = +V
- 8 = Offset Adj

**Note:** Dimensions in Inches

**Operating Note** This unit is a high performance photodiode/transimpedance amplifier unit. The output voltage is equal to the optical signal power multiplied by the photodiode responsivity in A/W and the feedback resistance in ohms. The unit is DC-coupled and should be shielded from stray or room lights to avoid saturation of the amplifier.

### SPECIFICATIONS

Operating Temperature (°C)	24
Photodiode Active Area	5.8mm x 5.8mm
Photodiode Shunt Resistance (MΩ)	500 min; 1000 typ
Photodiode Shunt Capacitance (pF)	1000. nom
Responsivity @ 850 nm (V/W)	$0.55 \times 10^9 / 10^8$
NEP (100Hz, 850 nm) (W/Hz <sup>1/2</sup> )	$< 1 \times 10^{-14}$
Bandwidth (Hz)	DC - 100
Offset Voltage (mV), adj	< 3.

*RoHS Compliant*